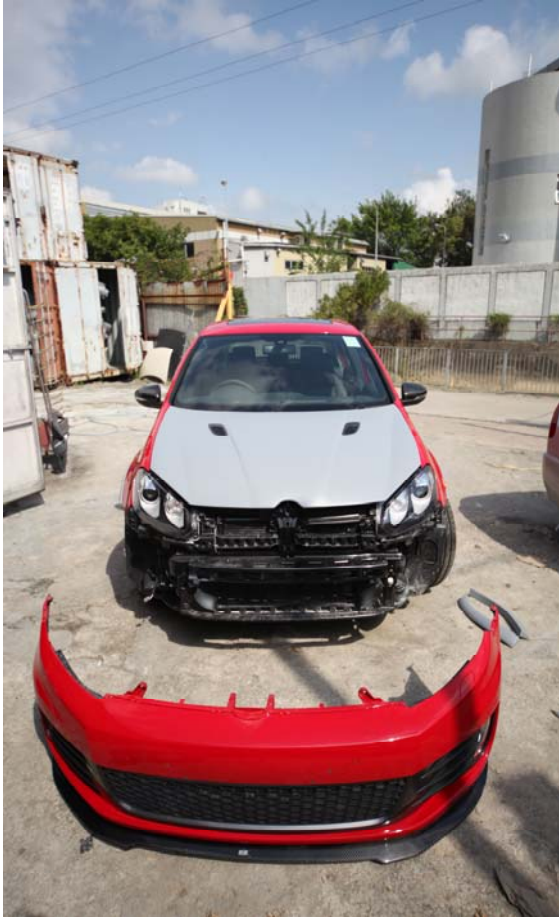


Golf VI Razor

Application: Golf VI (All models)



Front Bumper and LED DRL Installation Guide



Step 1:

Remove front bumper by unscrewing the 2 screw on the Left and Right side of the bumper.

Remove bottom screws and under tray fasteners.

Carefully unplug the headlight washer sensor, fog light and parking sensors.

The bumper should now be removed.



Note:

You will need to carefully remove the headlight washer complete harness and the cover to retrofit on the Razor bumper. Do not install the harness to the new bumper yet as we need to modify on this part by cutting out some edge to make way for the new LED DRL light. Be careful when removing the washer cover, you're advice to use compress air to give the washer some pressure so that the nostrils will come out.

Remember:

Keep the original headlight washer cover and parking sensors.



As the Bumper is now removed and all parts disconnected, you now start to fit the original parts to the Razor bumper.

The Razor bumper is made to the exact fitment with to the original bumper, so basically, you're working on 2 almost identical part except for the LED Light area.

Refit all the pipes and nostrils to the Razor bumper.



As you can see here the original bumper's headlight washer, piping and parking sensors are all removed. There's no need to remove the original fog light as they are useless for the Razor bumper.

Step 2

To make way for the Razor LED DRL, you will need to cut out a small piece of plastic from the original headlight washer harness.

The piece cut out will not affect the function and fitting integrity of the harness. This is necessary to make way for the LED DRL.



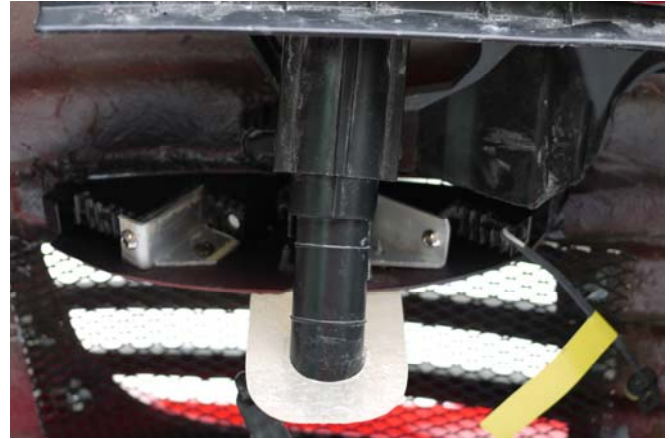
Step 3

You now place the LED DRL on to the Razor bumper and secure the position by the L-shape aluminum mounts. These mounts are essential to keep the LED DRL in position.



Once you secured the L-shape aluminum mounts and LED DRL position, you can now drop the headlight washer harness on the bumper and secure it with 4 screws at the top. (see top right picture).

Here're more reference pictures of the installed LED DRL and Headlight washer harness.



Step 4

You can now wire the LED DRL driver and position is near the chassis with double side tape and strap ties.

Note:

DO NOT DIRECTLY WIRE THE LED DRL LIGHT WITHOUT THE DRIVER.
Follow the LED light wiring menu.



Color Slate:
Matt Black

Color Code:
Nissan "KH2" Metallic Grey

Step 5

Coloring the Razor Bumper

The Razor Bumper comprises of 3 major colors.

- A. The Body Color = Follow your car
- B. The Front Slate Color = Matt Black
- The Front Surround Insert Color = "Nissan KH2 Graphite Grey"

Follow below the Razor LED DRL Wiring Menu

Wiring

The DRL can be connected with and without position light. You can select the desired option by switching the connection as shown in the drawing.

Note: Please seal the not mounted plug with the enclosed rubber plug.

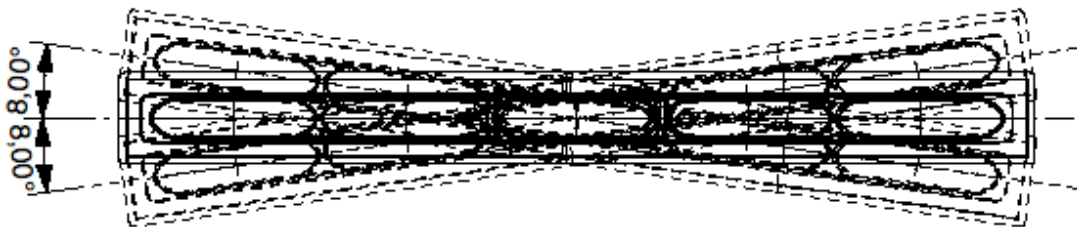


Instruction manual for Revozport Razor LED Daytime Running Light.

Rotation of the lamp

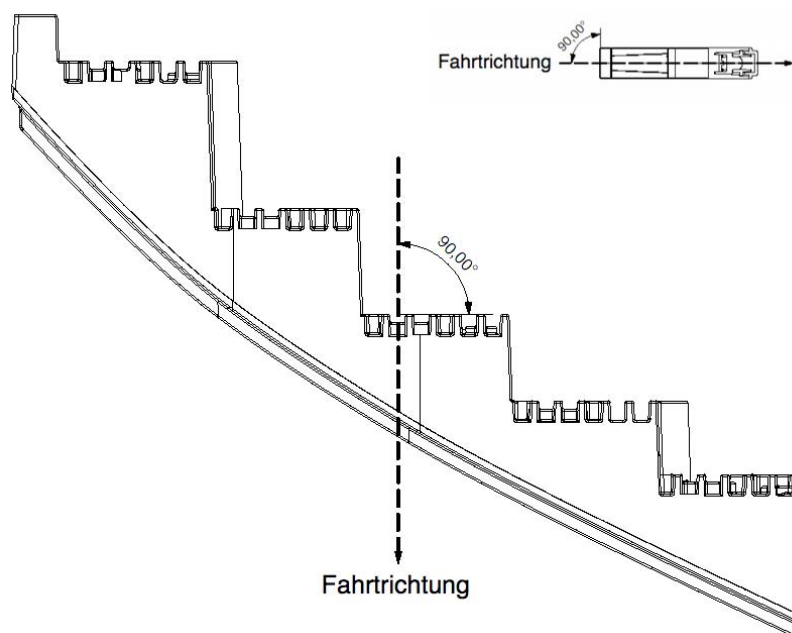
From the front view the lamp can be turned up to $\pm 8^\circ$ degrees in longitudinal axis. This allows an optimal adjustment to the vehicle design.

Zulässiger Einbau mit Drehung um X-Achse



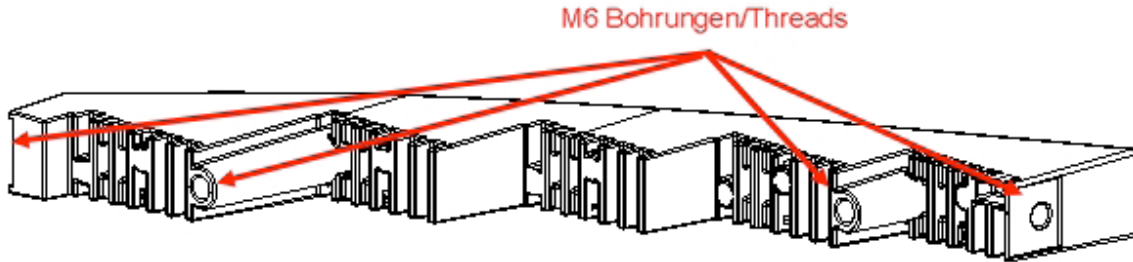
Adjustment to driving direction

The light must face exactly to the front. Please follow the drawing below.
driving direction

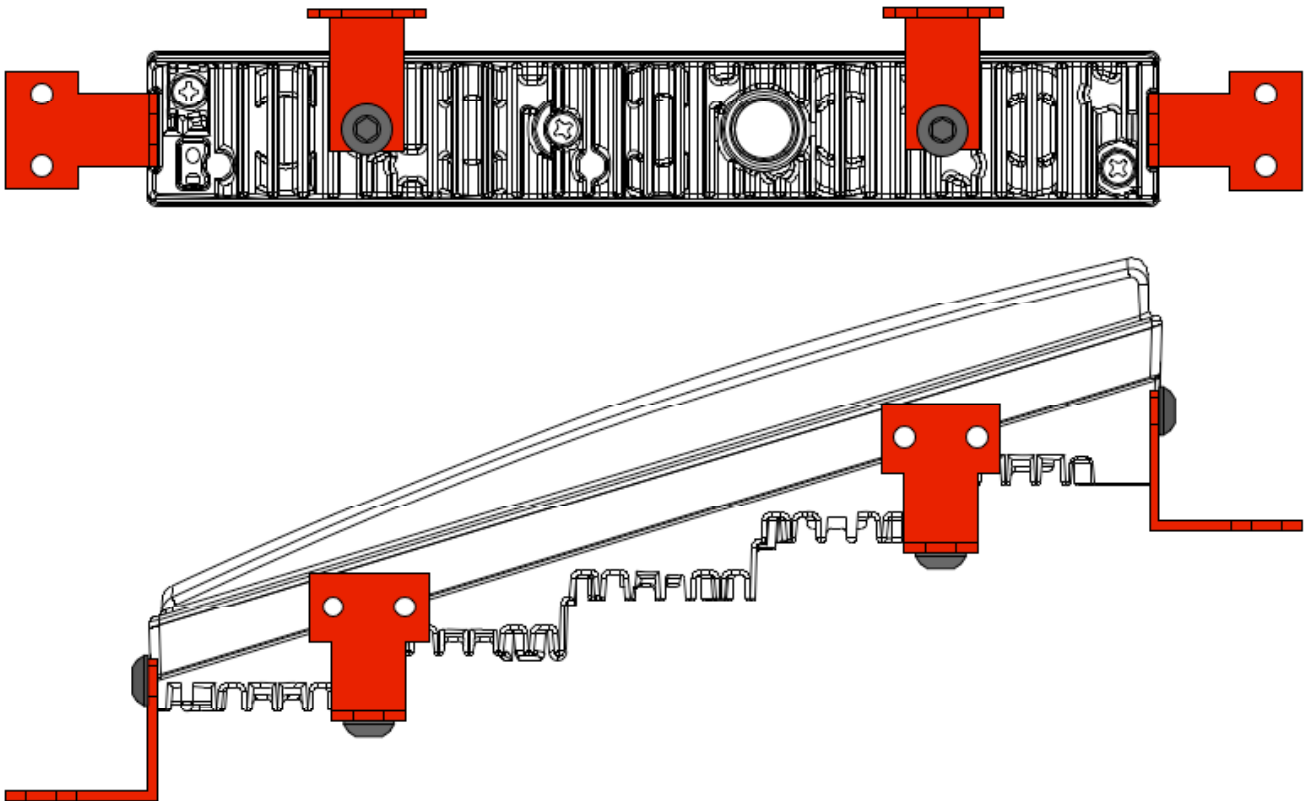


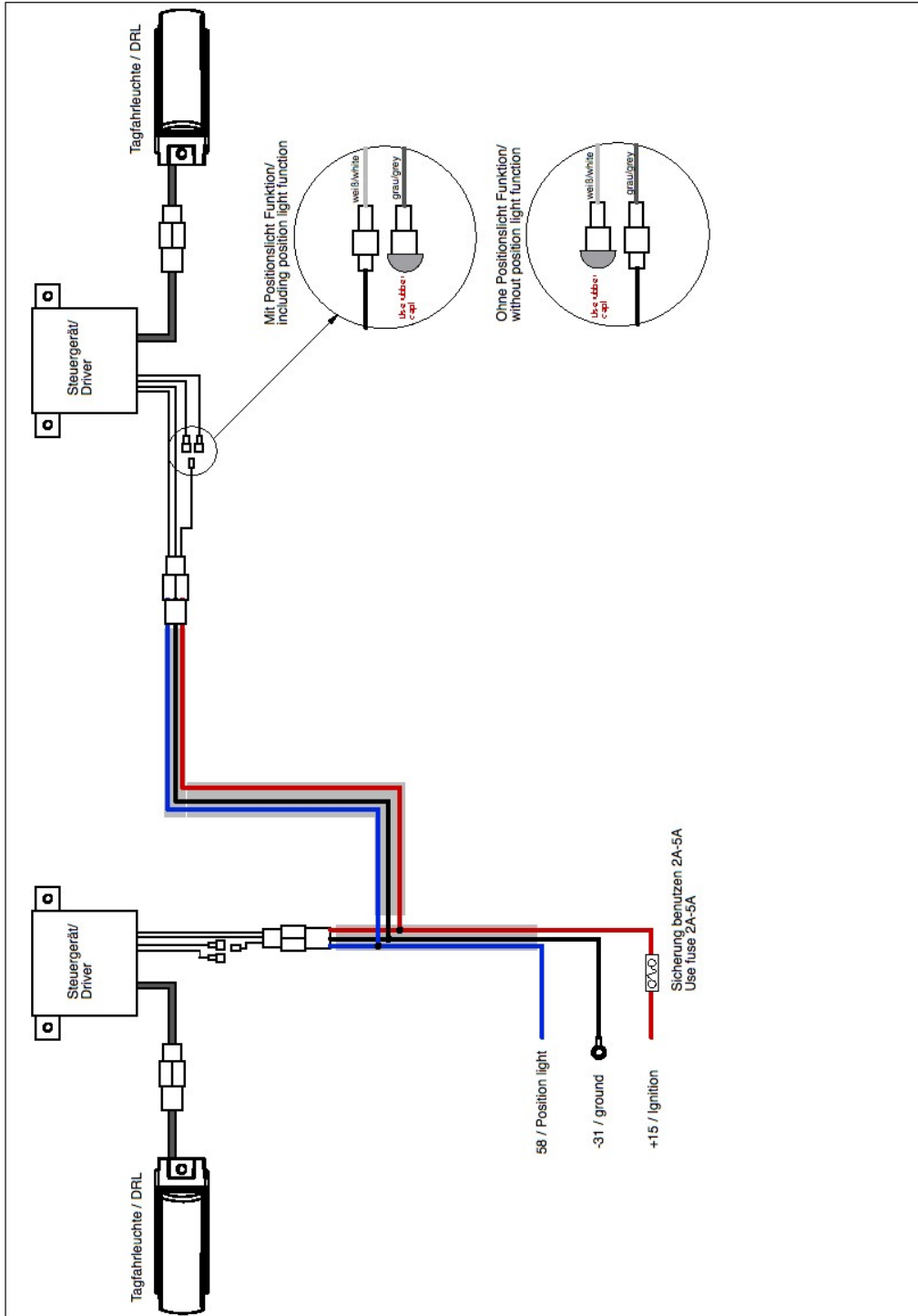
Installation options

Each DRL has 2 x M6 holes in the back and at the side for fixation.



Mounting options with optional mounting brackets. There are only 2 brackets required for installation. The drawing shows all options for mounting.





+